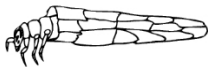


Know your  
pond mates!



# Insects & Arthropods



Caddisfly larvae



Diving beetle

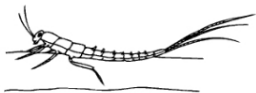


Dragonfly nymph



Diving beetle larvae

# Insects & Arthropods



Mayfly nymph



Water boatman



Water cricket



Whirlygig beetle



Water scorpion

# Protozoans and Small Animals



Diatom



Vorticella



Pandorina



Euglena



Stentor



Closterium



Synura



Colpidium



Micrasterius

# Protozoans and Small Animals



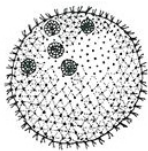
Stylonychia



Peranema



Phacus



Volvox



Cosmarium



Amoeba



Paramecium

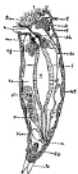


Spirogyra



Oscillatoria

# Protozoans and Small Animals



Rotifers



Waterbear  
(Tardigrade)



Nematode



Planarian



Cyclops



Water shrimp



Water flea  
(Daphnia)

# Algae and other Microorganisms



Volvox  
(green)



Haematococcus  
(red coloured)



Spirogyra  
(green)



Dinoflagellate  
(red, green,  
some multicoloured)



Desmids  
(green)

# How many pond mates did you discover?

---

## Credit details

Image Credits: Images were compiled from scans, public domain work and clipartETC.

URL: <https://www.biologycorner.com/worksheets/identifypond.html>. License:

This work is licensed under a Creative Commons Attribution-NonCommercial-ShareAlike 4.0 International License.